

AUSTRALIAN MADE LED LIGHTING SOLUTIONS

INDUSTRIAL & COMMERCIAL APPLICATIONS



Aqualuma LED Lighting

124 Siganto Drive, Helensvale, 4212, QLD, Australia

www.aqualuma.com

COMPANY PROFILE

Established in 2004, Aqualuma is a privately owned company based on the Gold Coast in Queensland, Australia.



Aqualuma Directors, Grant and Carl Amor

Widely regarded as the world's leading marine lighting manufacturer, Aqualuma has redefined the category with superior technology and high-quality products. An extensive research and development program has seen the range grow to include a comprehensive and versatile range of lighting, including thru-hull, submersible, deck and flood lighting. Aqualuma's iconic thru-hull range is the world's first and only underwater light range with a one-piece polymer housing unit that has no lenses or seals and is patented in 127 countries.

Since its inception, Aqualuma has worked exclusively with LEDs and has gained an extensive knowledge of what is required to design and manufacture world-class LED fixtures. Aqualuma's engineers include some of the world's leading LED specialists and optical designers. Strategic partnerships with US based LED and electronics manufacturers combine to give Aqualuma the strength on which its reputation has been built.

Building on their technological advantage, Aqualuma started developing their commercial and industrial lighting range, which was introduced in January 2013. The Highbay family has been independently tested to be the most energy efficient in the world. Designed and manufactured in Australia to the same standards as their marine lighting range, Aqualuma guarantees a long maintenance-free life span.

By harnessing the latest LED technology, it is now possible to manufacture industrial and commercial light fixtures that save money in both power consumption and maintenance costs. However, it is apparent that traditional lighting manufacturers and new start up companies do not always unlock the full potential offered by LED technology. Light fixtures currently available often leave a lot to be desired in terms of efficacy (the amount of light emitted for the power consumed) and reliability.

Aqualuma has sales and service centres in Europe, Asia, Oceania, UAE and the USA. Aqualuma products are distributed to more than 52 countries.

Proud supporters and sponsors of the Following:



COMPANY DETAILS



Company Name: AMG (QLD) PTY LTD

Trading Name: Aqualuma LED Lighting

Australian Business Number: ABN 85 075 510 324

Date of incorporation/registration: 01 November 1999

Registered Business Address: 124 Siganto Drive, Helensvale 4212, Australia

Phone: 1300 145 555

Int Phone: +61 7 5519 4555

Facsimile: +61 5519 4177

Email: info@aqualuma.com

Website: www.aqualuma.com

Insurance: Public & Products Liability to \$20m

Industry Code: C24320

Head Office Address: 124 Siganto Drive, Helensvale 4212, Australia



QUALITY MANAGEMENT

ISO 9001: 2015 – Company

Australian Border Force Trusted Trader – Company

IEC Certified - Highbay Family of Products

UL Certified - Highbay Family of Products

RINA – Marine Family of Products

CE Mark - In accordance with ISO/IEC 17050-1:2004 – Marine Family of Products

COMPLIANCE & CERTIFICATION

Electrical Regulatory Authorities Council:	E4386
Regulatory Compliance Mark:	5720
ACMA and EESS:	85075510324

Independent testing to relevant Standards is conducted for all our products;

- Electrical Safety to 60598.2.1 and 60598.1
- Ingress Protection to 60598.1 clause 9.2
- Impact Protection 62262
- Electro Magnetic Compliance to 55015, 6100.03.2, 61000.3.3, and 61547
- UL 1598 & CSA C22.2 NO 250.0-08
- UL 8750
- FCC to Part 15 and ANSI C64.4
- Food Safety by HACCP
- Photometry to IESNA LM79, ANSI NEMA ANSLG C78.377, ANS C82.77
- In-Situ Temperature Measurement to IES LM-84 and ANSI/UL 1598
- Lifetime to IES LM-80-08 and IES TM-21

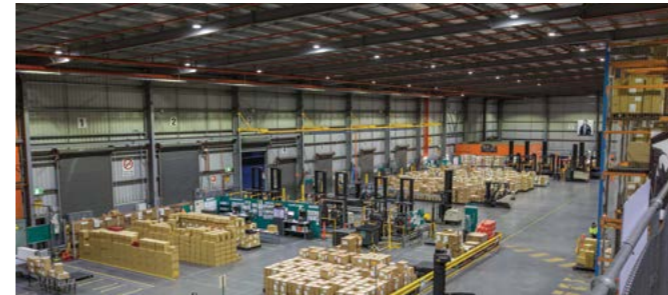
Aqualuma products are listed with the following rebate schemes;

- ESS IPART** (NSW, Australia)
- ESC VEET** (VIC, Australia)
- DLC** (United States of America)
- LED Lighting Facts** (United States of America)



ISO 9001:2015 CERTIFIED

PRIMARY APPLICATIONS



Warehousing



Manufacturing



Exteriors / Awnings



Sports



Cold Rooms



Retail



Showrooms



Food Production / Clean Rooms



Underwater



Dock / Jetty

PROUD TO SERVICE THE FOLLOWING



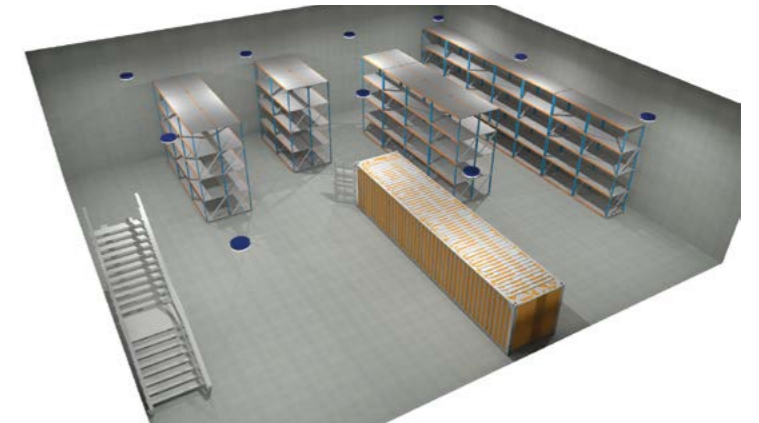
LIGHTING DESIGN SERVICE



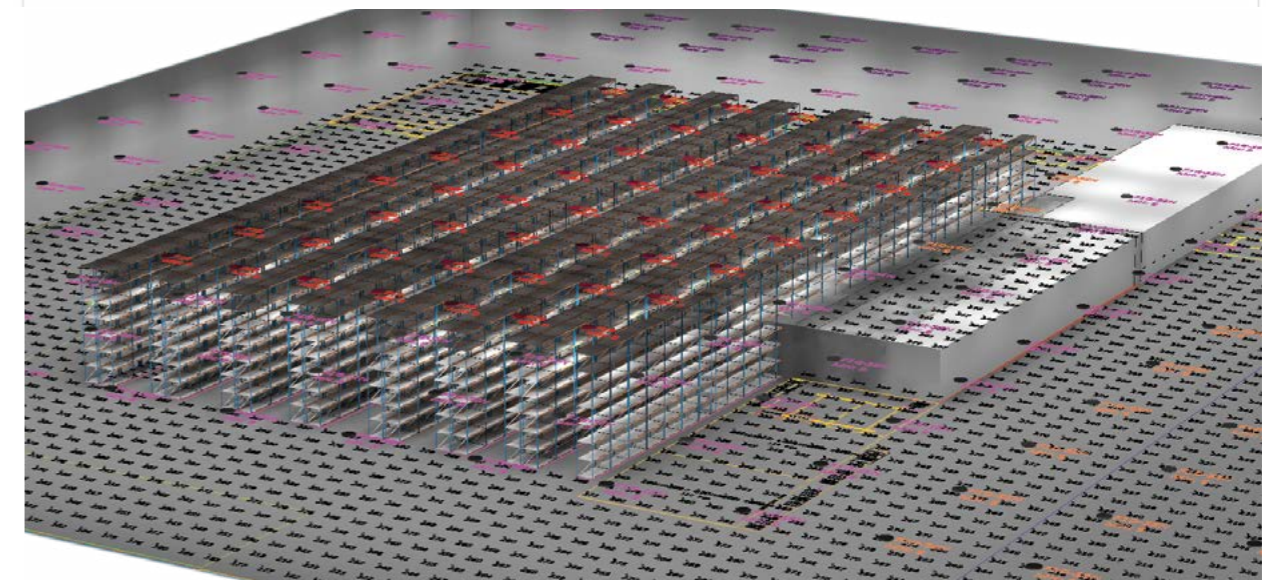
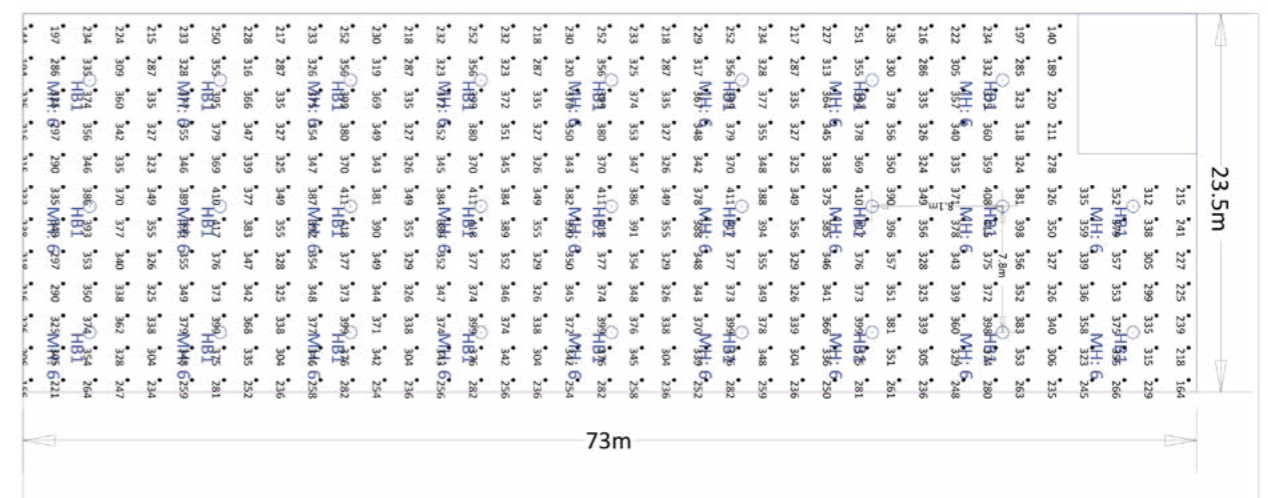
Aqualuma offers a lighting design service to ensure that your conversion to energy efficient lighting maintains or improves your current lighting requirements. Aqualuma's vast knowledge in the commercial and industrial sector allows us to best meet and exceed your needs across multiple environments, whilst ensuring your illumination meets relevant applicable regional standards.

Lighting design service offers:

- Design service for new builds
- Design service for retrofit
- Fixture optimisation
- Correct fixture selection for area or project
- 3D renders
- Lux readings point by point
- Average / uniform lux levels across area or project
- Designed to meet all AUS / NZ lighting standards where applicable.



Point by point lux readings



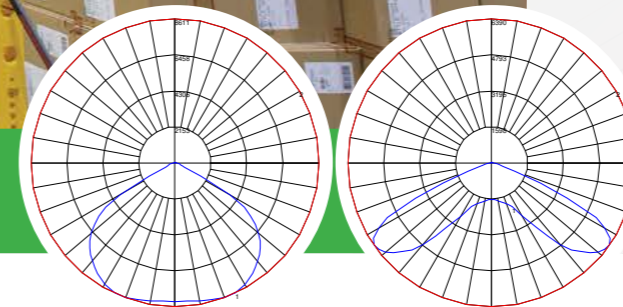
For more information regarding our lighting design services please visit www.aqualuma.com or call us at **1300 145 555** to speak with one of our trained sales consultants.

10
YEAR
WARRANTY



LED HIGHBAY

HIGHBAY OR LOWBAY OPTIC



The Aqualuma LED Highbay standard or lowbay optic is part of the premium commercial range and is designed specifically to replace traditional metal halide or induction lighting used in indoor and outdoor applications. Ideally suited for use in factories, cold stores and warehouses, including hazardous areas.

SPECIFICATIONS

LED Light Source	Lumileds
Colour Temp (Tc)	4000 or 5300 Kelvin
CRI	CRI > 80 CRI > 70
Luminous Flux	Up to 24,564 lm
Efficacy	Up to 162lm/W
LED Current / LED	90W, 125W, 165W
Input Voltage	90V-277V 47-63Hz
Warranty	10 Year premium warranty
Optical Options	Highbay, lowbay, shops & stores
Lens Options	Clear or diffused acrylic, polycarbonate

FEATURES

- One for one replacement for >400W metal halide light fittings
- 90W, 125W, & 165W versions available
- Full spectrum colour rendering (improved visual acuity in comparison to metal halide and fluorescent light fittings)
- L70 rated for minimum 100,000hrs at 25°C
- LM6 marine grade aluminium / Powder coated with Dulux Duralloy – 10 year durability warranty
- Certified to all applicable AS/NZ, European and USA standards
- Instant on / off
- IP66 rated
- IPART and VEET approved
- Intelligent control & sensor options available
- Flicker free



ELECTRICAL SPECIFICATIONS

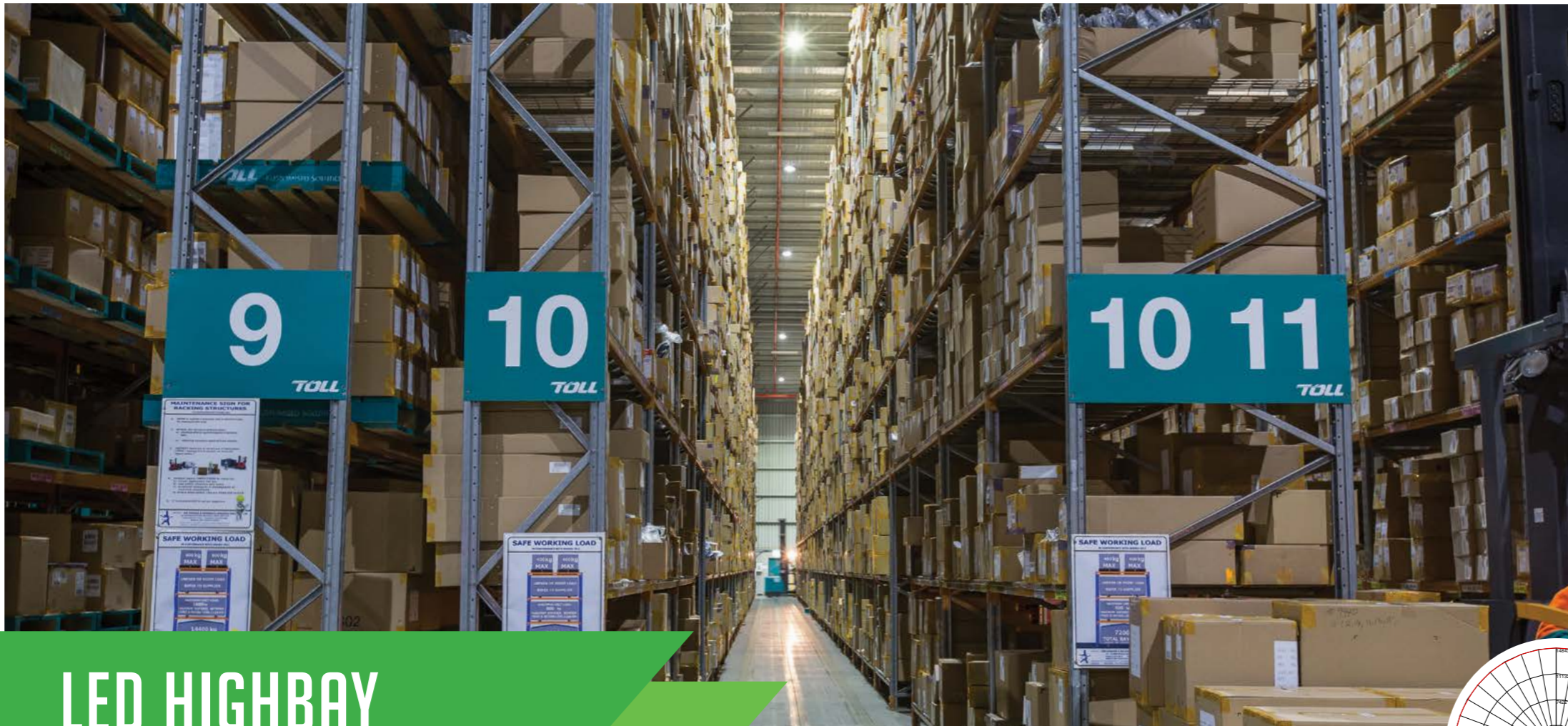
- Operating voltage:** 90-277VAC, 47-63Hz
- Power factor:** $\lambda > 0.90$
- Operating Temperature:** -40 °C to 45 °C

MECHANICAL INFORMATION

- Weight:** 7.5kg
- Mounting:** Eye, bracket, ceiling plate, ezystrut
- Cabling:** 3m PVC cable + 3 pin plug (std)
- Housing:** Marine grade powder coated "copper free" aluminium
- Lens:** Clear or diffused acrylic, polycarbonate

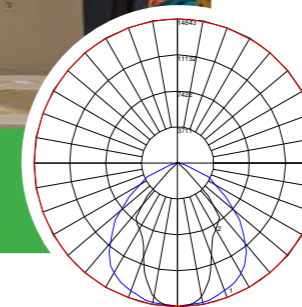


10 YEAR WARRANTY



LED HIGHBAY

aisle optic



The Aqualuma LED Highbay aisle optic is part of the premium commercial range and is designed specifically to replace traditional metal halide or induction lighting used in indoor and outdoor applications. The Highbay Aisle Optic is optimised to provide a long and narrow beam pattern, which is ideally suited to illuminate tall storage racking in warehouses and distribution centres.

Specifications

LED Light Source	Lumileds
Colour Temp (Tc)	4000 or 5300 Kelvin
CRI	CRI > 80 CRI > 70
Luminous Flux	Up to 25,182 lm
Efficacy	Up to 155 lm/W
LED Current / LED	90W, 125W, 165W
Input Voltage	90V-277V 47-63Hz
Warranty	10 Year premium warranty
Optical Options	Aisle optic
Lens Options	Clear or diffused acrylic, polycarbonate

Features

- One for one replacement for >400W metal halide light fittings
- 90W, 125W, & 165W versions available
- Full spectrum colour rendering (improved visual acuity in comparison to metal halide and fluorescent light fittings)
- L70 rated for minimum 100,000hrs at 25°C
- LM6 marine grade aluminium / powder coated
- Certified to all applicable AS/NZ, European and USA standards
- Instant on / off
- IP66 rated
- IPART and VEET approved
- Intelligent control & sensor options available
- Flicker free

Electrical Specifications

- **Operating voltage:** 90-277VAC, 47-63Hz
- **Power factor:** $\lambda > 0.90$
- **Operating Temperature:** -40 °C to 45 °C

Mechanical Information

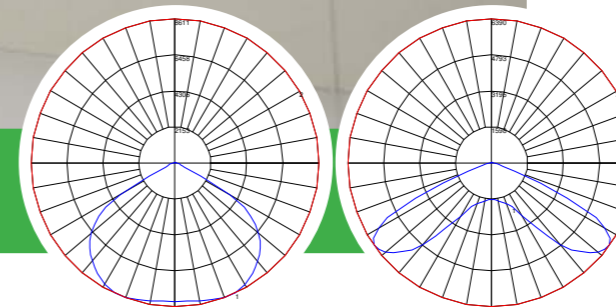
- **Weight:** 7.5kg
- **Mounting:** Eye, bracket, ceiling plate, ezstrut
- **Cabling:** 3m PVC cable + 3 pin plug (std)
- **Housing:** Marine grade powder coated "copper free" aluminium
- **Lens:** Clear or diffused acrylic, polycarbonate





LED HIGHBAY

WITH FOODSAFE ENCLOSURE



The Aqualuma Premium LED Highbay with HACCP approved Food Safe enclosure has been designed for clean areas and food processing facilities. Ideally suited for new builds and retrofit outs in factories, cold stores and warehouses Suitable for heights between 5-13m.

Specifications

LED Light Source	Lumileds
Colour Temp (Tc)	4000 or 5300 Kelvin
CRI	CRI > 80 CRI > 70
Luminous Flux	Up to 19,047 lm
Efficacy	Up to 162lm/W
LED Current / LED	90W and 125W
Input Voltage	90V-277V 47-63Hz
Warranty	7 Year premium warranty
Optical Options	Highbay, lowbay, Aisle, Shops & Stores
Lens Options	Clear or diffused acrylic, polycarbonate

Features

- Replaces >400W metal halide light fittings in any areas requiring food grade fixtures
- 90W & 125W versions available
- Full spectrum colour rendering (improved visual acuity in comparison to metal halide and fluorescent light fittings)
- L70 rated for minimum 100,000hrs at 25°C
- LM6 marine grade aluminium / powder coated
- Certified to all applicable AS/NZ, European and USA standards
- Instant on / off
- IP66 rated
- IPART and VEET approved
- Intelligent control & sensor options available
- Flicker free

Electrical Specifications

- Operating voltage:** 90-277VAC, 47-63Hz
- Power factor:** $\lambda > 0.90$
- Operating Temperature:** -40 ° C to 45 ° C

Mechanical Information

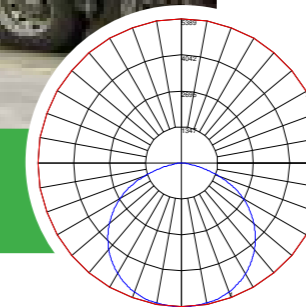
- Weight:** 9.4kg
- Mounting:** Eye, bracket, ceiling plate, ezystrut
- Cabling:** 3m PVC cable + 3 pin plug (std)
- Housing:** Marine grade powder coated "copper free" aluminium
- Enclosure:** 1150 Aluminium powdercoated white gloss
- Lens:** Clear or diffused acrylic, polycarbonate





LED HIGHBAY

LITEBAY



Our market research indicated a high demand for a suitable alternative to the Aqualuma premium Highbay range. To facilitate this need Aqualuma has developed the Litebay, an Australian made and warranted Highbay. The Litebay has been created with the same quality and ingenuity Aqualuma is renowned for, but at a very competitive price. The 150W Litebay produces an impressive 19,245 lumen's providing an ideal light for light replacement solution for the commercial & industrial sector.

Specifications

LED Light Source	Lumileds	
Colour Temp (Tc)	5000 Kelvin	
CRI	CRI > 80	
Lens Options	Clear Acrylic	Diffuse Acrylic
Luminous Flux	19,245lm (129lm/w)	18,629lm
LED Current / LED	150W	
Input Voltage	90V-277V 47-63Hz	
Warranty	7 year	
Lens Options	Clear or diffused acrylic	

Features

- One for one replacement for 400W metal halide light fittings
- Output flux 19,245 lm
- Luminaire efficacy up to 129 lm/W
- Full spectrum colour rendering (improved visual acuity in comparison to metal halide and fluorescent light fittings)
- LM6 marine grade aluminium / powder coated
- Certified to all applicable AS/NZ standards
- Instant on / off
- Sensor options available
- IP66 rated
- Flicker free

Electrical Specifications

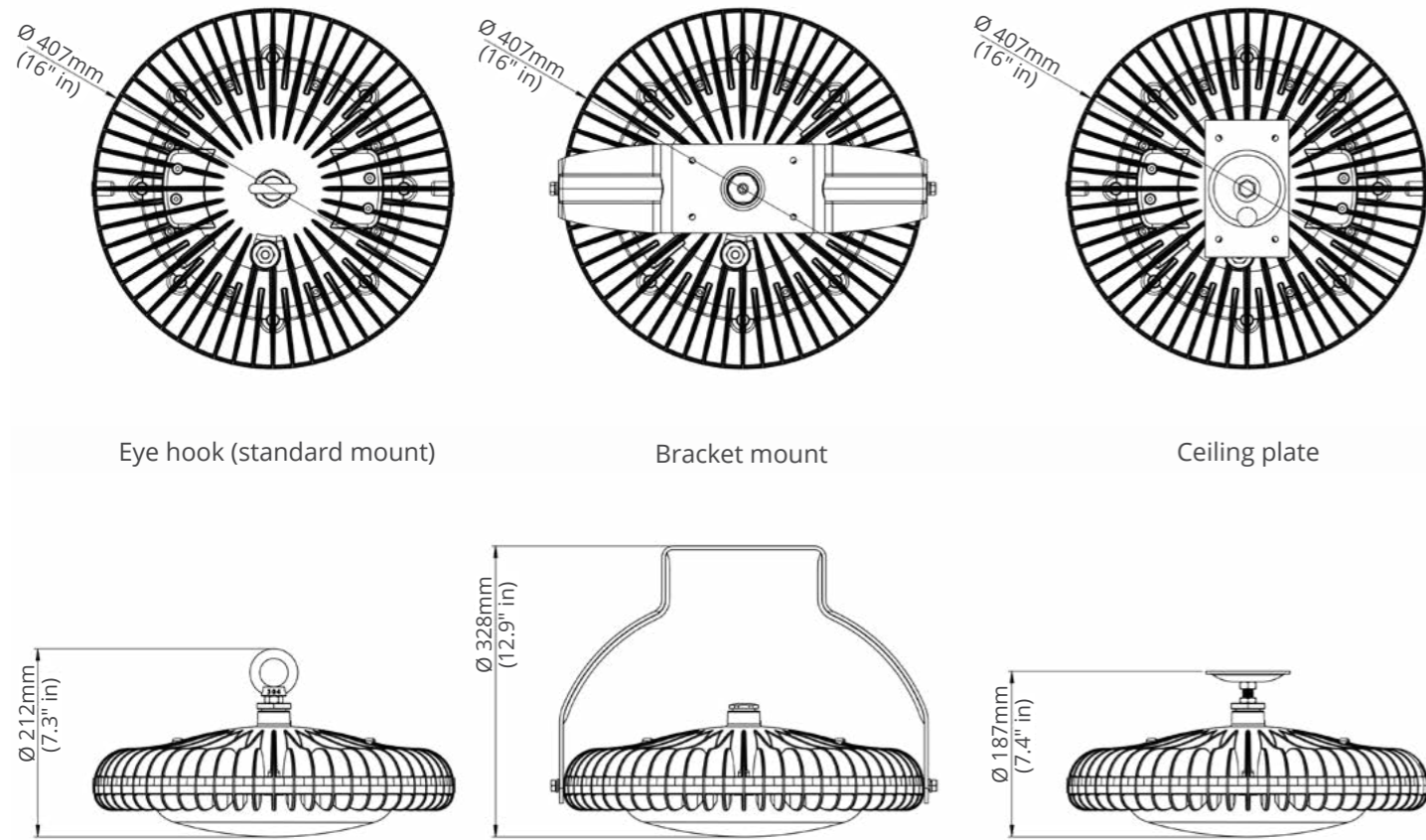
- Operating voltage:** 90-277VAC, 47-63Hz
- Power factor:** $\lambda > 0.99$
- Operating Temperature:** -40 ° C to 45 ° C

Mechanical Information






- Weight:** 7.5kg
- Mounting:** Eye, bracket, ceiling plate, ezystrut
- Cabling:** 3m PVC cable + 3 pin plug (std)
- Housing:** Marine grade powder coated "copper free" aluminium
- Lens:** Clear or diffused acrylic



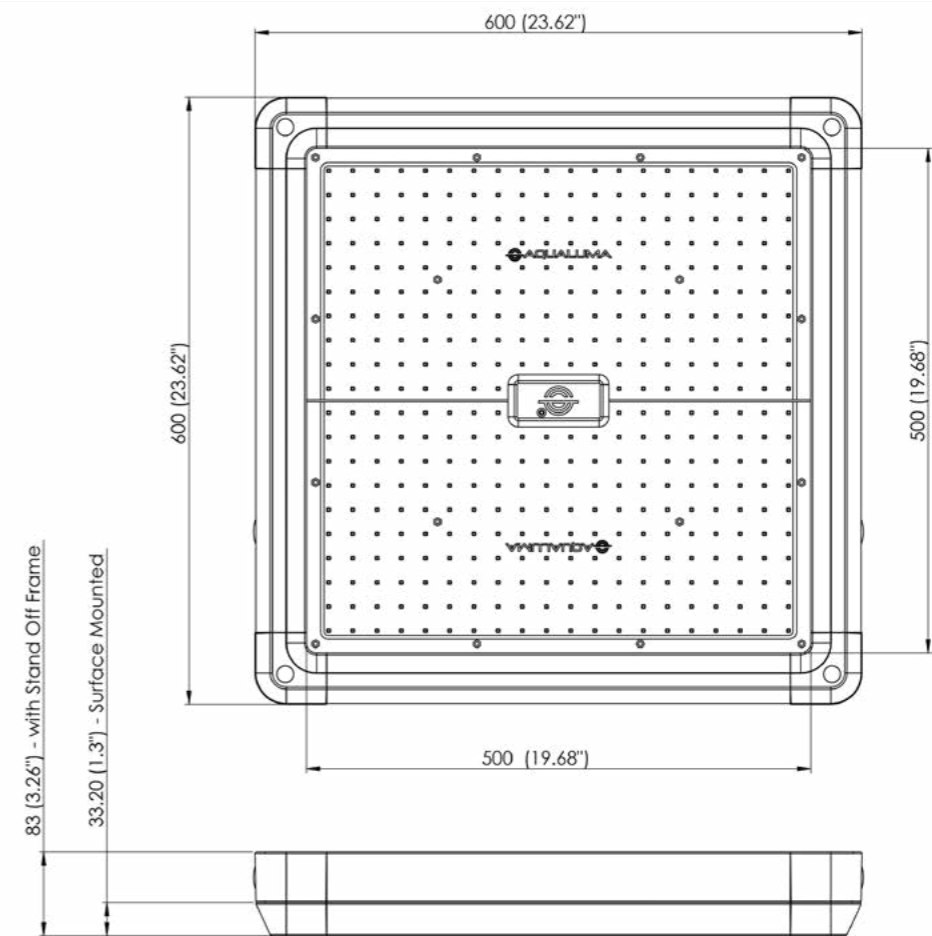
DIMENSIONS - ALL Highbay Models



MOUNTING OPTIONS - ALL Highbay Models

	Eye mount (standard mount) 316 marine grade stainless steel eye mount
	Bracket mount (full 360° rotation) Powder coated aluminium bracket
	Ceiling plate
	Clear acrylic lens, diffuse acrylic lens, polycarbonate lens
	Ezstrut mount

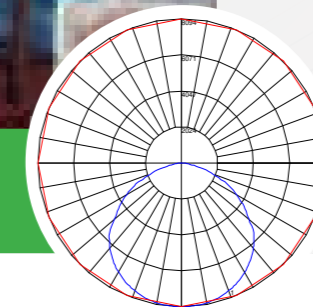
DIMENSIONS - FGP Canopy Light





HACCP LED CANOPY

HACCP & PETROLEUM GRADE



The Aqualuma HACCP Certified LED Canopy Light has been designed for both new builds and retro fitting into food processing facilities, commercial cold stores, fuel station forecourts, and other canopy roofs. The Canopy light allows for ease of installation and can be surface mounted on multiple ceiling types including concrete or sandwich panel. The slim low-profile design requires very low maintenance and continues Aqualuma's renowned product reliability and energy efficiency.

SPECIFICATIONS

LED Light Source	Lumileds
Colour Temp (Tc)	5000 Kelvin
CRI	CRI 75
Luminous Flux	from 13,500lm to 23,095lm
LED Current / LED	90W, 125W, 165W
Input Voltage	90V-277V 47-63Hz
Warranty	5 year
Lens Options	Clear or Diffused
Control Options	Intelligent control options available
Mounting Options	Surface mount or with stand off frame

FEATURES

- Provides lighting for food preparation facilities, commercial cold stores and service station forecourts
- 90W, 125W & 165W versions available
- Output flux from 13,500lm to 23,095lm
- Luminaire efficacy up to 150lm/W
- 6063 T5 aluminium, white powder coated and ABS componentry
- 5 year warranty
- Instant on / off
- Food Grade certification
- IP65 rated
- IPART and VEET approved
- Intelligent control options available
- Flicker free

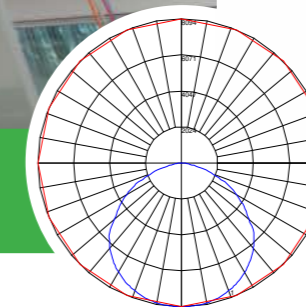
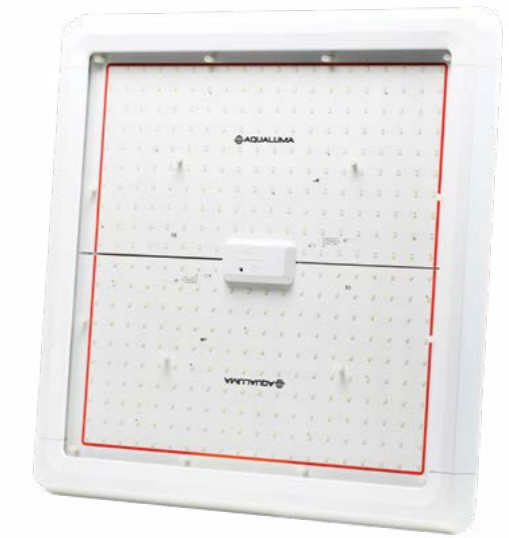
ELECTRICAL SPECIFICATIONS

- Operating voltage:** 90-277VAC, 47-63Hz
- Power factor:** $\lambda > 0.96$
- Operating Temperature:** -40 °C to 45 °C

MECHANICAL INFORMATION

- Weight:** Slimline=6.5kg / with stand off frame=8kg
- Mounting:** Surface mount or with stand off frame
- Cabling:** 1.5m cable rated to -40 °C to 75 °C (std)
- Housing:** 6063 T5 aluminium, white powder coated and polycarbonate componentry
- Lens:** Impact resistant acrylic (standard), Polycarbonate or Toughened Glass (special order)





LED CANOPY

WITH MAINTAINED EMERGENCY LIGHT (SELF CONTAINED)

The Aqualuma Food & Petroleum Grade Canopy with Maintained Emergency Light (Self Contained) has been designed for both new builds and retro fitting into food processing facilities, commercial cold stores, fuel station forecourts, and other canopy roofs. The Canopy light allows for ease of installation and can be surface mounted on multiple ceiling types including concrete or sandwich panel.

Specifications

		Emergency Mode
LED Light Source	Lumileds	
Colour Temp (Tc)	5000 Kelvin	
CRI	CRI 75 / (CRI 90 special order)	
Luminous Flux	13,500lm	540lm
LED Current / LED	90W only	4.3W
Input Voltage	220-240 47-63Hz 0.7A max	
Warranty	5 year	
Lens Options	Clear or Diffuse Acrylic	
Emergency Classification	Spacing D50	Duration 180mins = 3 hours

Features

- Provides lighting for food preparation facilities, commercial cold stores and service station forecourts with Maintained Emergency (Self-contained power supply)
- 90W version available / 4.3W MEL
- Output flux 13,500lm
- 6063 T5 aluminium, white powder coated and ABS componentry
- 5 year warranty
- Instant on / off
- HACCP Food Grade certification
- IP65 rated lamp head / IP20 rated control pack
- Flicker free

Electrical Specifications

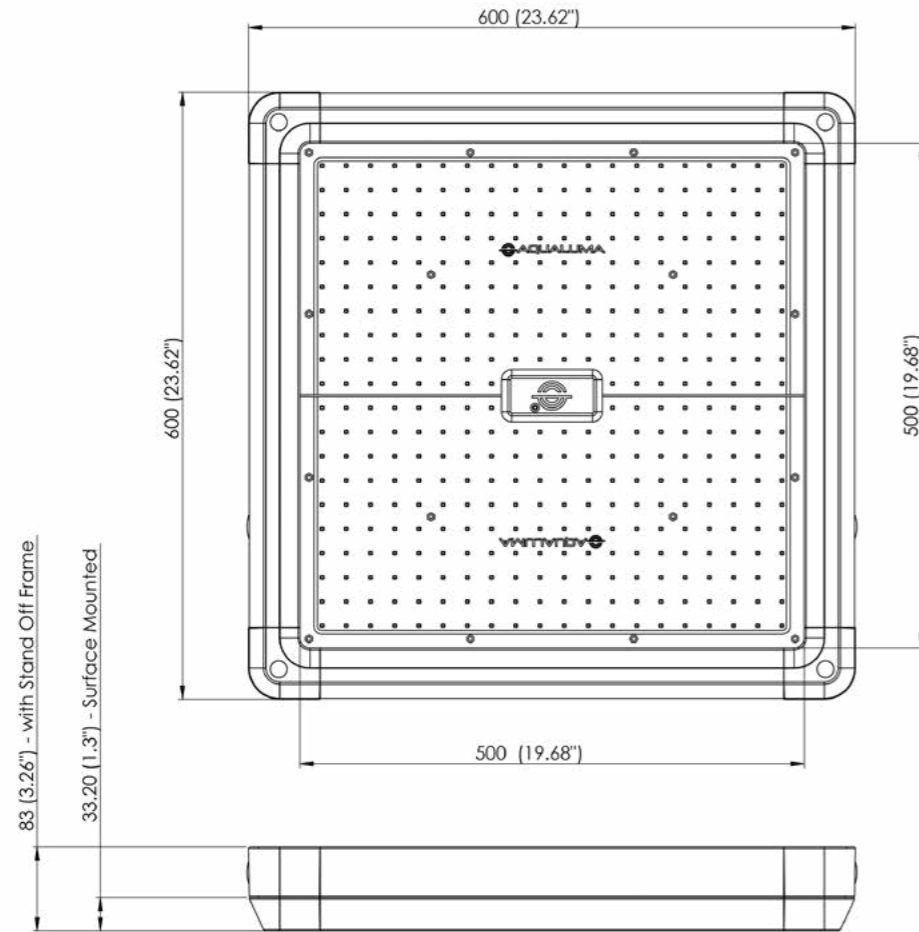
Operating voltage: 220-240VAC, 47-63Hz
Power factor: $\lambda > 0.96$

Mechanical Information

Weight: 9.5kg
Mounting: With stand off frame
Cabling: 2.1m cable rated to -40 °C to 75 °C (std)
Housing: 6063 T5 aluminium, white powder coated and polycarbonate componentry
Lens: Impact resistant acrylic (standard), Polycarbonate or Toughened Glass (special order)



DIMENSIONS - FGP CANOPY LIGHT



MOUNTING OPTIONS - FGP CANOPY LIGHT



Stand Off Frame: Allows install into surfaces where surface mount option is not available such as concrete slabs or any material where ceiling access is limited. Stand off frame sold as an optional extra.



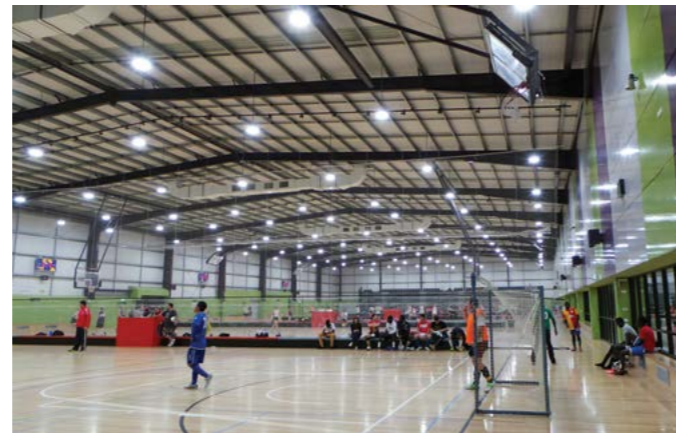
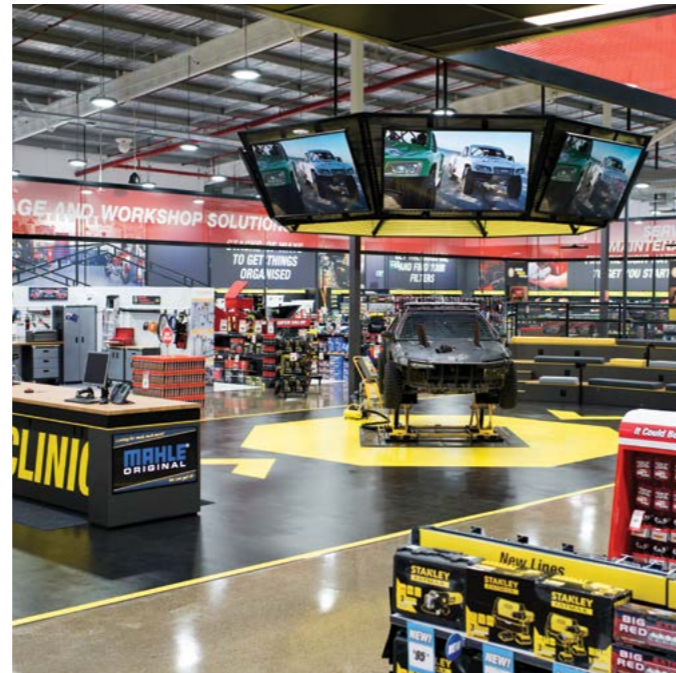
Surface Mount - Slimline: Allows for a clean visually appealing surface mount install where the driver can be placed upright into the ceiling cavity. Plastic caps are provided to conceal the screw heads once securely tightened.

Please Note: It is the responsibility of the installer to ensure that the appropriate hardware is used to fix the luminaire to the ceiling. Holes have been sized for a M5 Tech Screw.

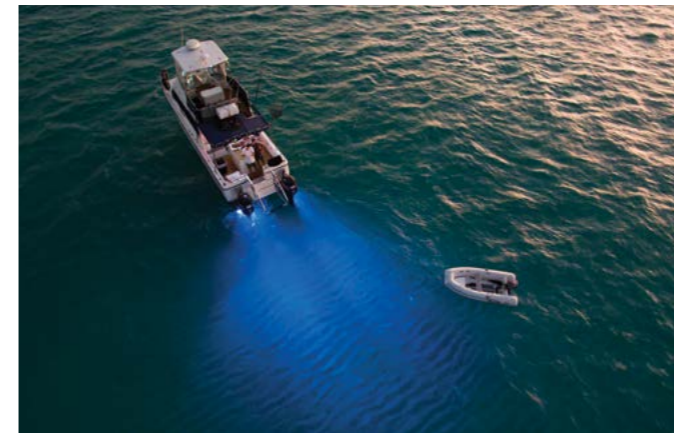
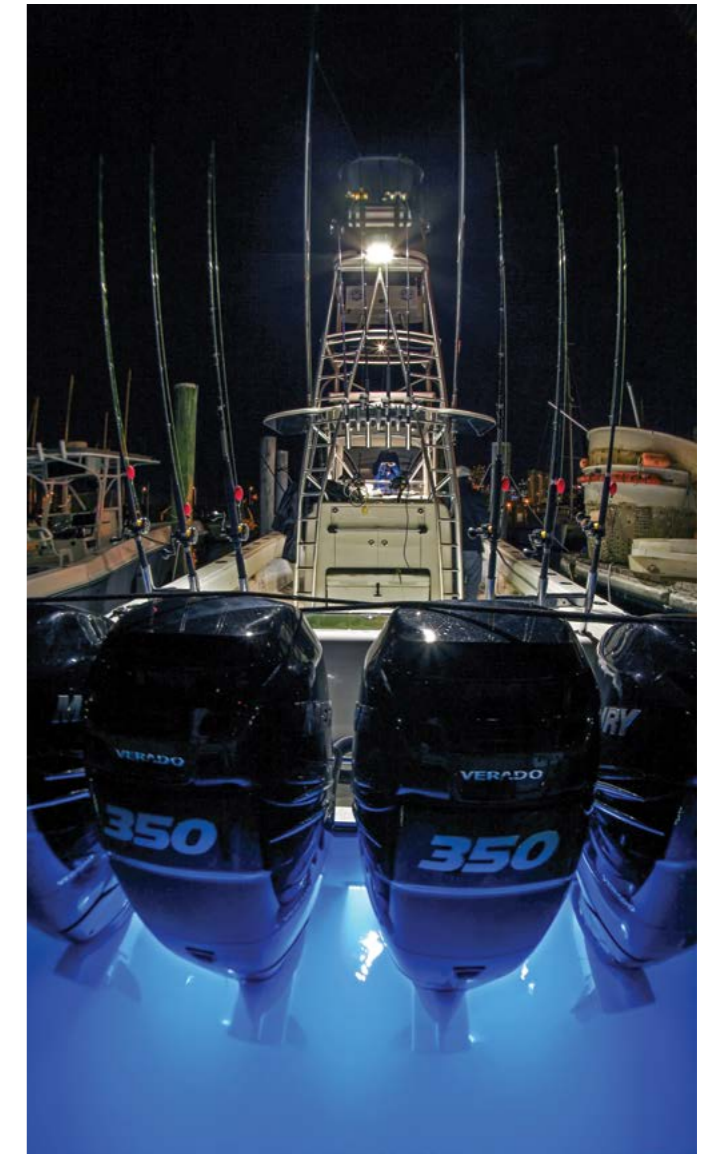
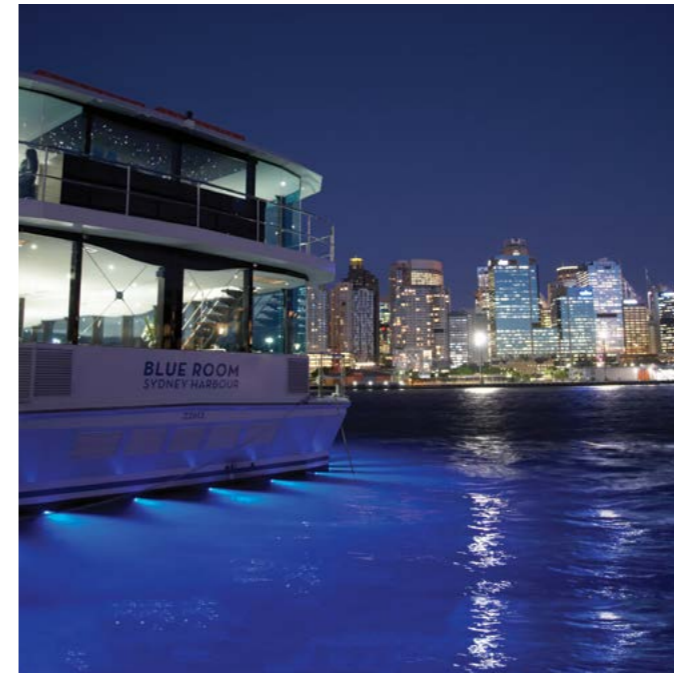
COMPLETED PROJECTS



COMPLETED PROJECTS



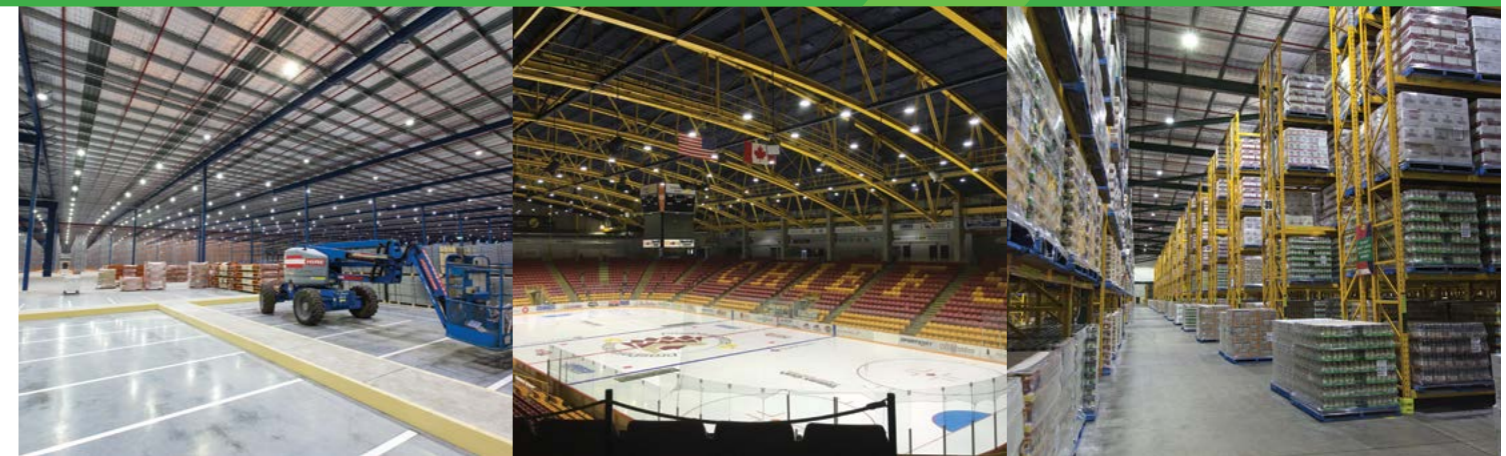
COMPLETED PROJECTS - MARINE





124 Siganto Drive, Helensvale, Queensland, Australia 4212
Ph: 1300 14 55 55 | info@aqualuma.com | WWW.AQUALUMA.COM

AUSTRALIAN MADE LED LIGHTING SOLUTIONS



INDUSTRIAL & COMMERCIAL APPLICATIONS

*All information contained in this brochure is correct at time of publication. All specifications are subject to change.



Aqualuma LED Lighting
124 Siganto Drive, Helensvale, 4212, QLD, Australia
www.aqualuma.com